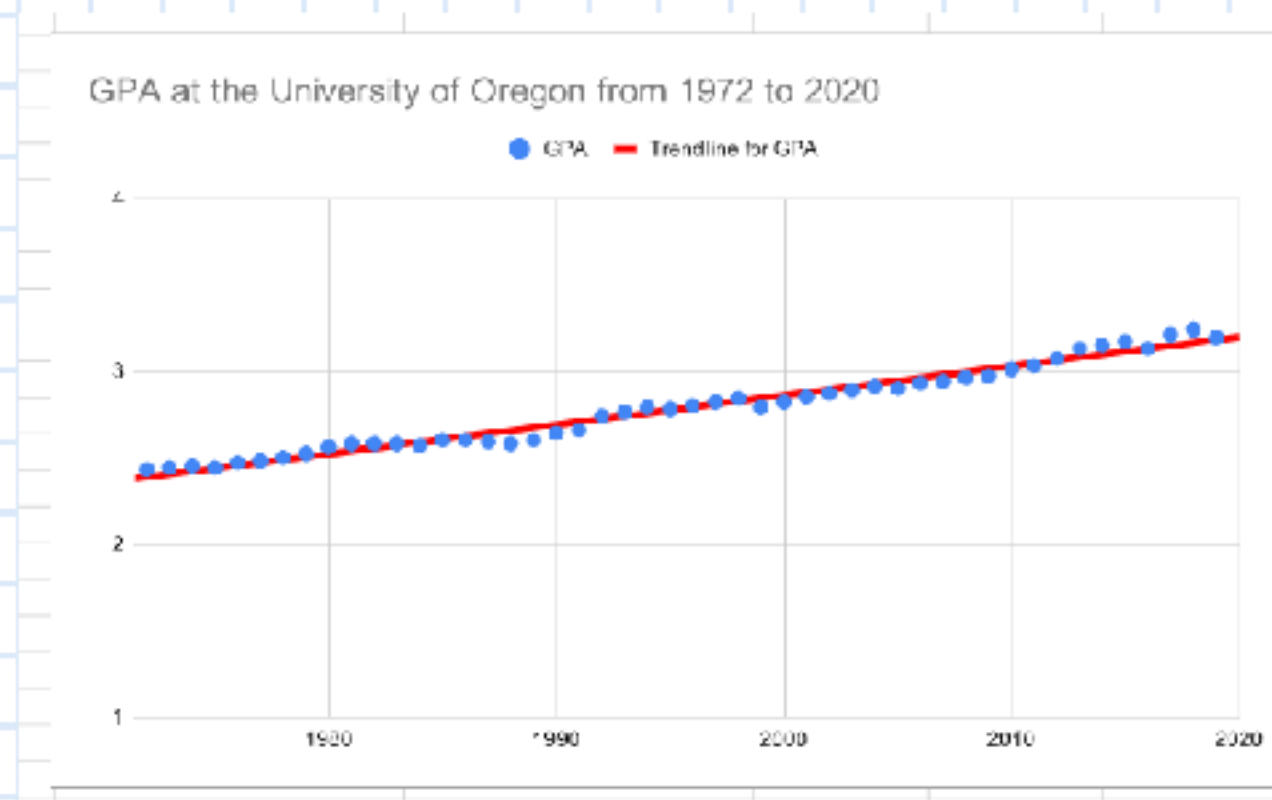


		% of total GPA	% change
total avg increase	0.76	19.00%	31.78%
avg annual increase	0.02	0.40%	0.67%

An increase of less than 1% per year does not indicate a significant change. However, an increase accounting for almost 20% of the total range of grades does indicate a significant increase. This is almost a full letter grade higher than averages were in 1972.

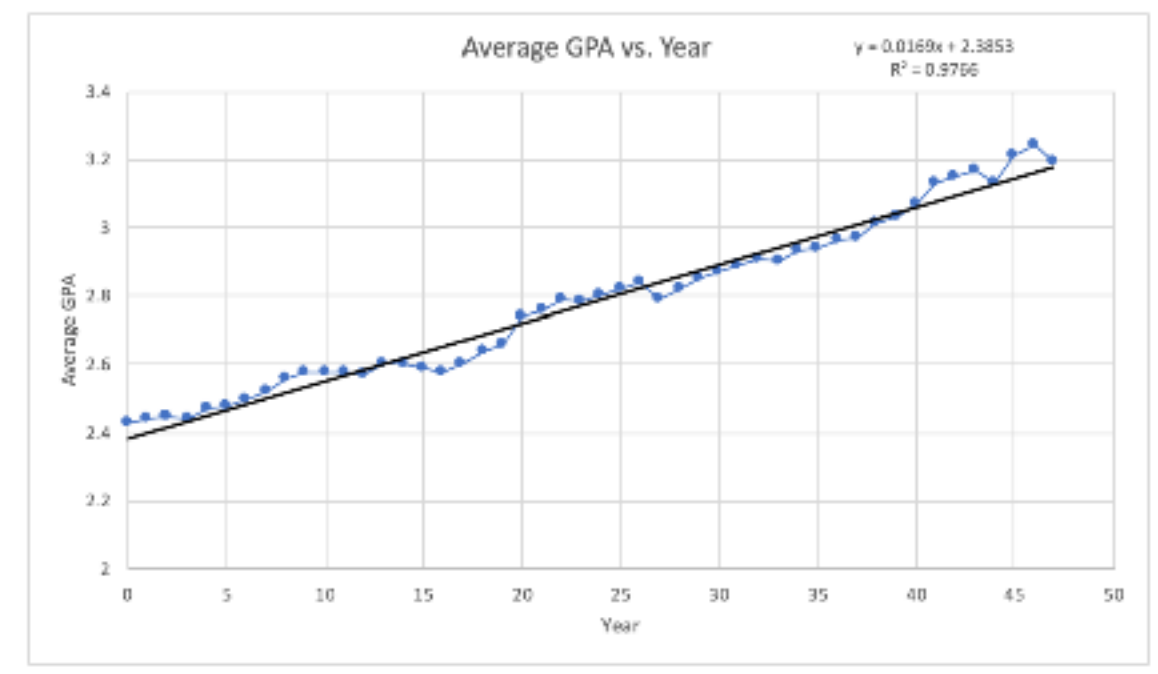
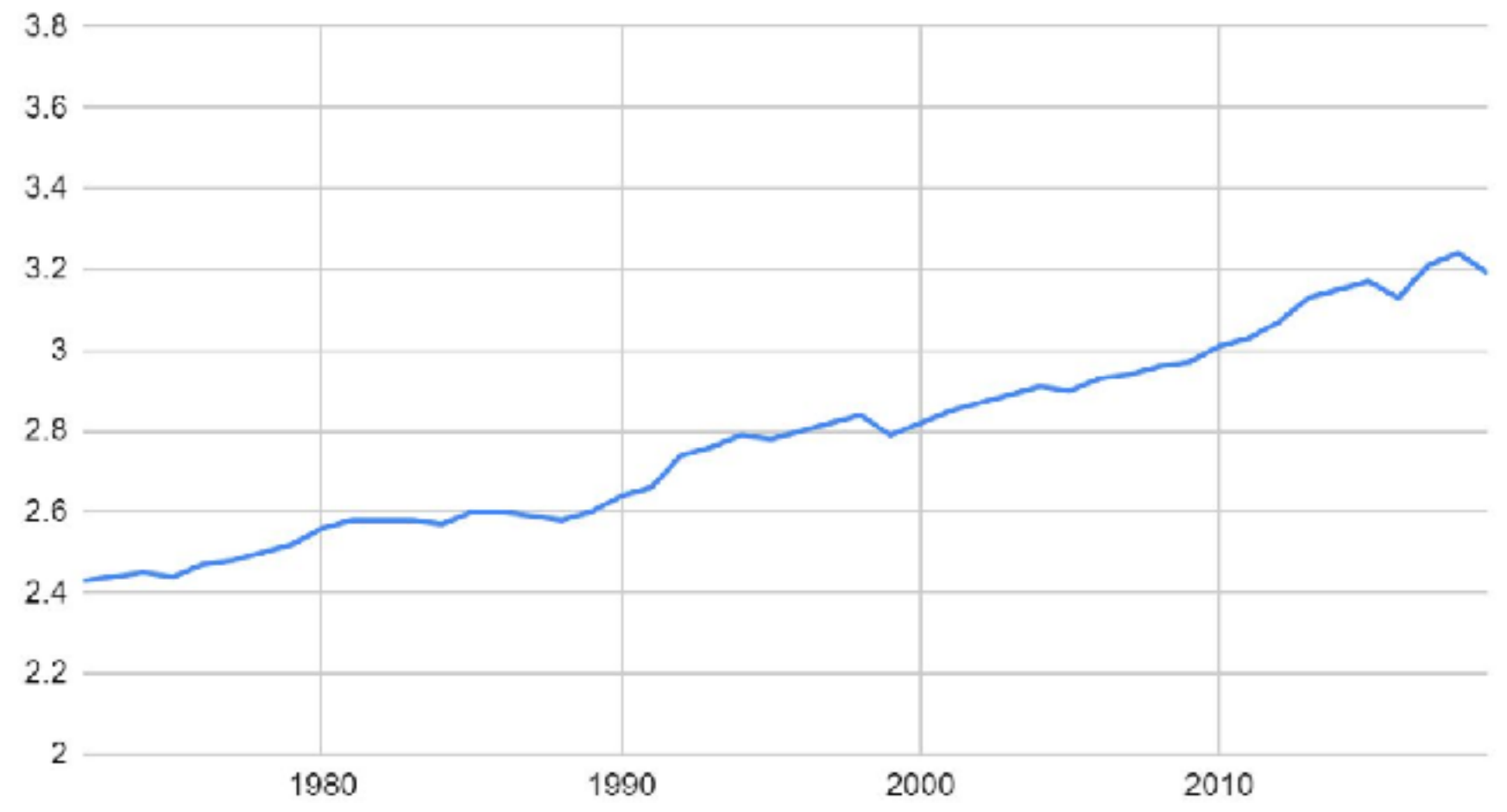


The correlation coefficient for the GPA scores is .9882 which is demonstrably positive. This means that there is a strong positive correlation between the passage of time and an increase in average undergraduate GPA. This increase would be deemed "significant" primarily because the correlation coefficient is so close to one, and therefore is quite high.

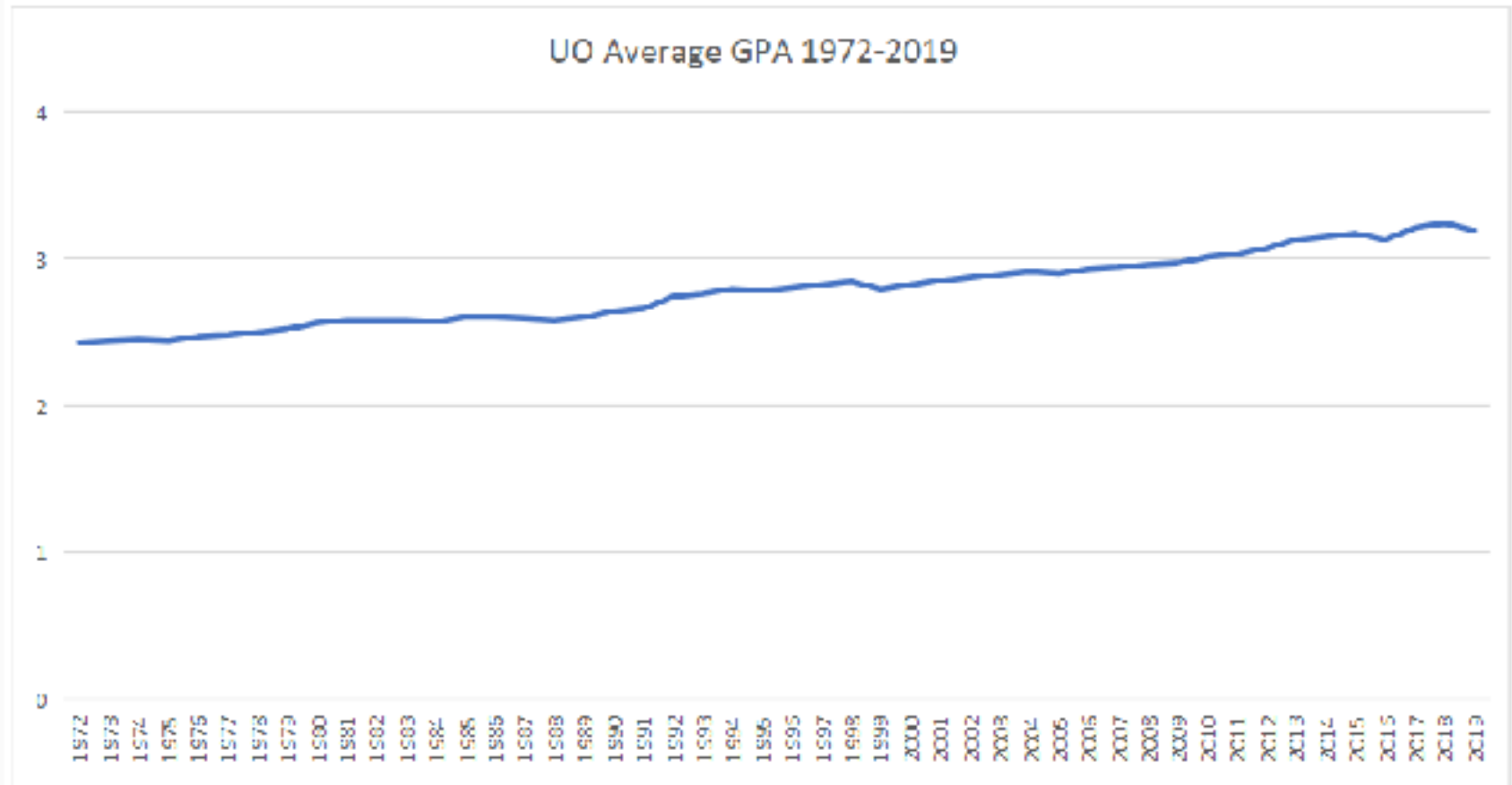


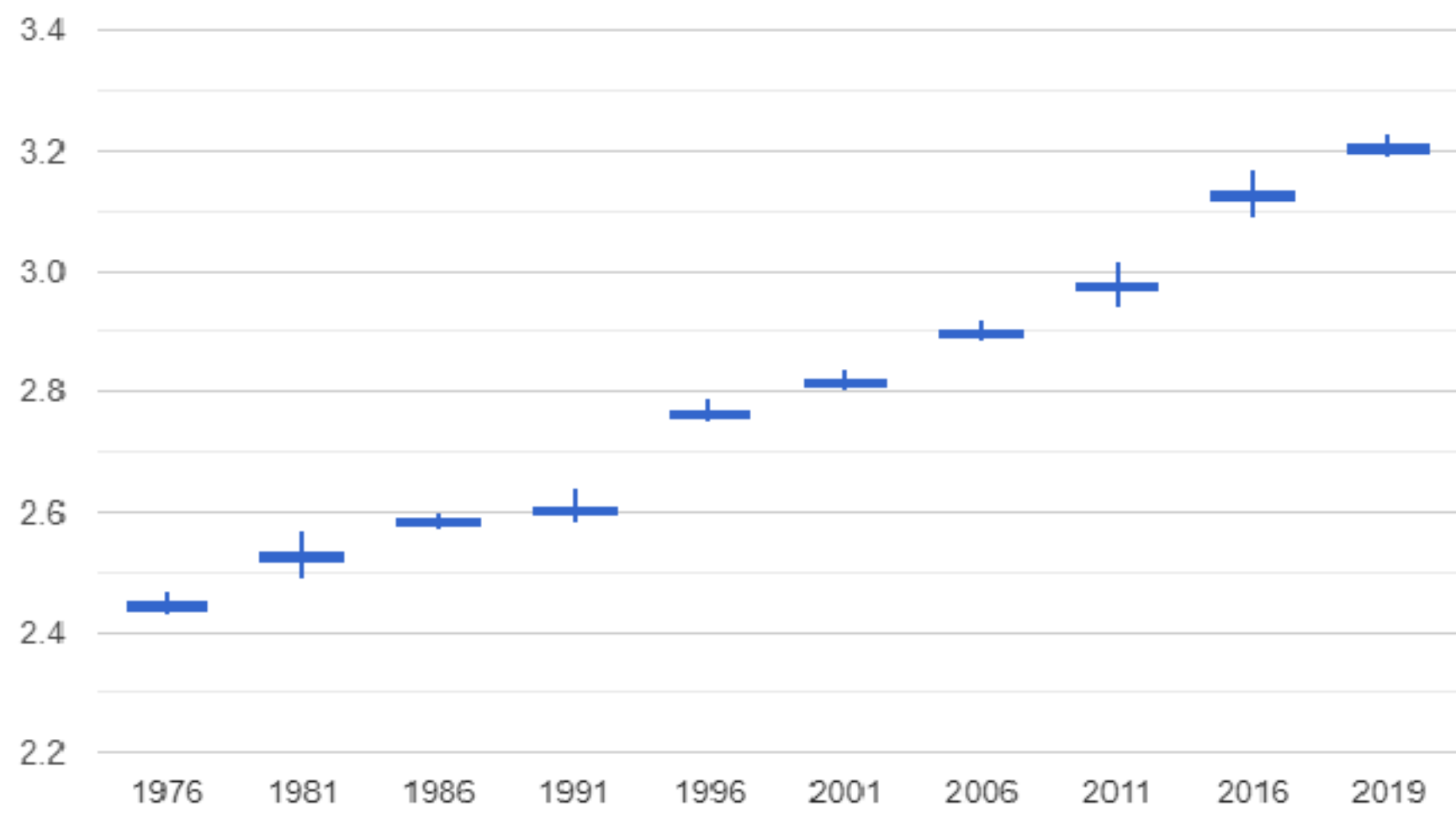
why are cows unable to fly

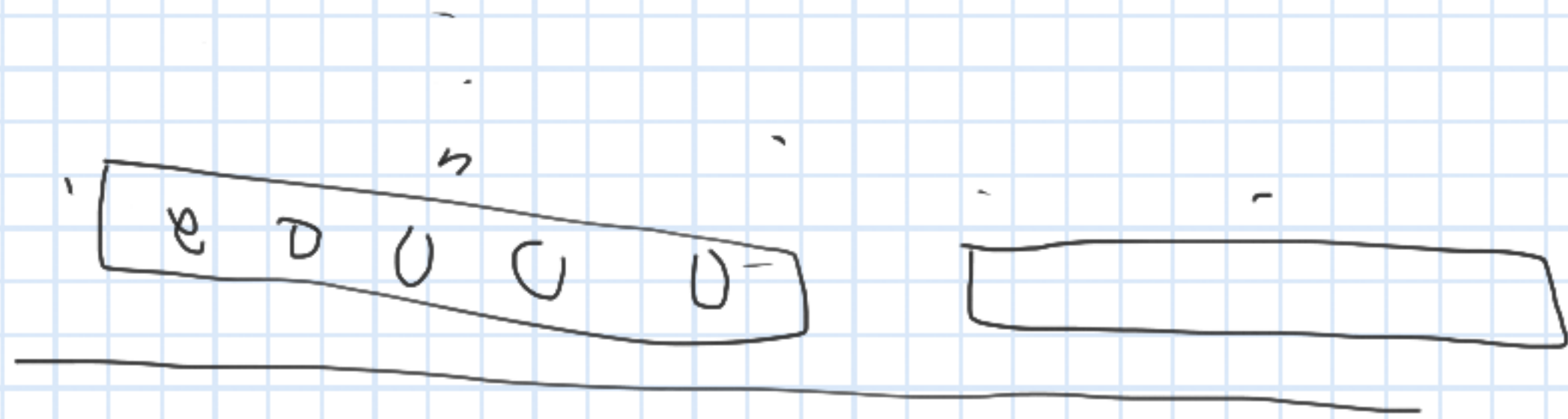
University of Oregon GPA



Using excel, I graphed the data points into a scatter plot. I added a linear trendline and displayed the linear equation and r^2 value of said trendline. In addition, I also calculated a mean of 2.7825 and a standard deviation of 0.23944528. With an R^2 value of 0.9766, the trendline fits the data quite well, meaning the data does not vary from the trendline. This shows a slight increase in GPA between 1972 to 2019. And although the year-to-year difference is small, over the course of many years, inflation results.







f m e